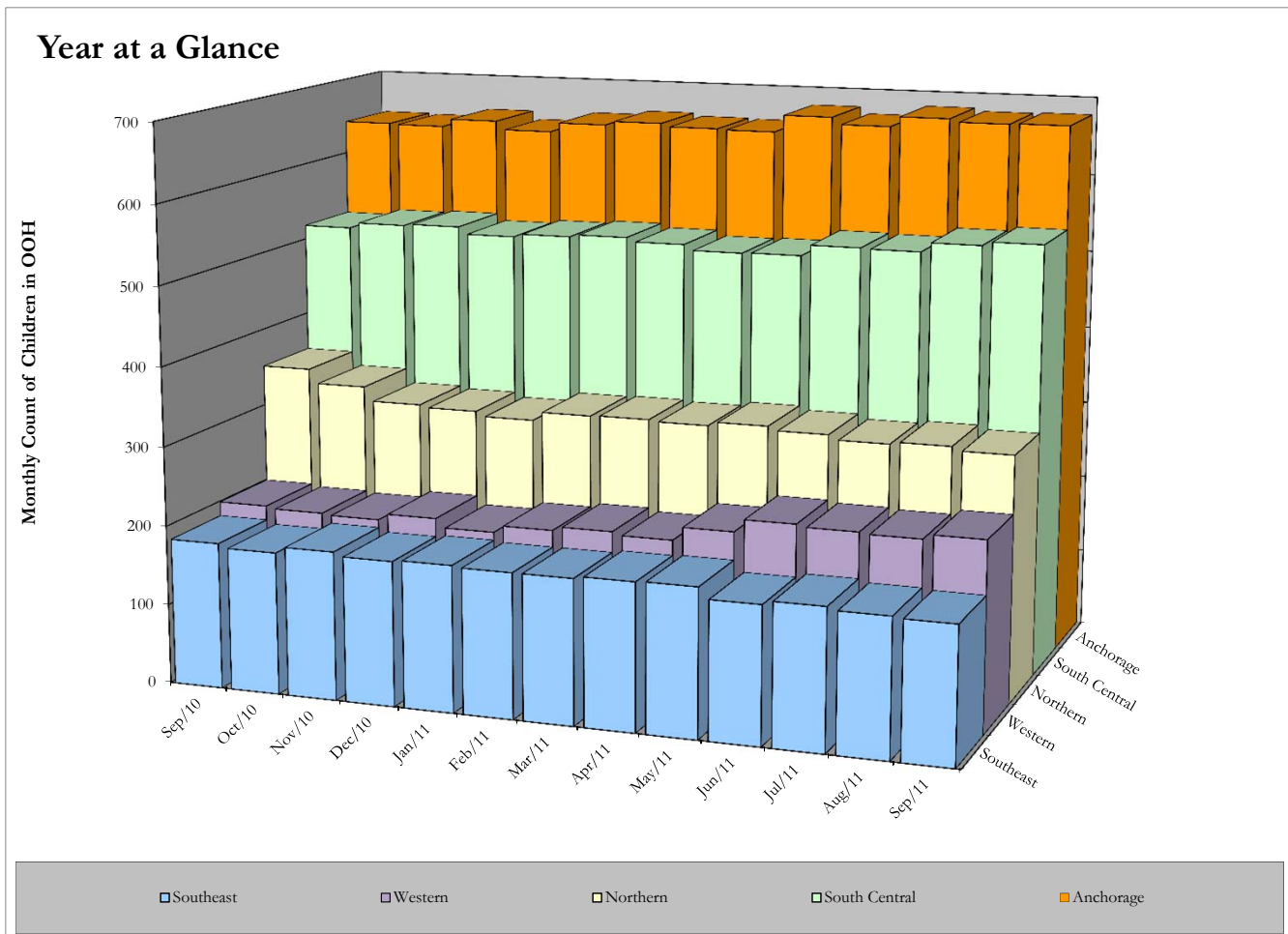


**All Children in Alaska OCS Out-of-home placement between September, 2010, and September, 2011, by Region.**

Region	Sep-10	Oct-10	Nov-10	Dec-10	Jan-11	Feb-11	Mar-11	Apr-11	May-11	Jun-11	Jul-11	Aug-11	Sep-11
Anchorage	644	643	653	642	654	659	655	654	676	667	680	676	677
Northern	354	336	318	315	309	320	321	319	324	319	313	316	311
South Central	520	527	529	520	524	527	522	515	516	530	529	541	546
Southeast	184	179	187	182	184	182	182	185	186	172	177	173	171
Western	202	199	197	205	194	203	208	204	221	237	234	232	238
Total	1,904	1,884	1,884	1,864	1,865	1,891	1,888	1,877	1,923	1,925	1,933	1,938	1,943

Out-of-home placement is the last option considered when reasonable efforts to protect a child in his or her own home have been exhausted by OCS. The first preference considered in all out-of-home placements for a child or youth is a relative's home. When it is not possible to place a child with a relative it is necessary to place the child in a licensed foster home. Residential care facilities may offer short-term emergency shelter as well as more long-term residential treatment.



Data Source: ORCA. Program used to tabulate statistics: monthly\_ooh\_web.sas.  
 Data in this report is current as of October 4, 2011. Subsequent reports with the same date parameter will contain up-dated statistics.  
 If you have any questions regarding this data please forward your inquiry to [ocs@alaska.gov](mailto:ocs@alaska.gov).