

Culturally responsive, comprehensive & accessible service delivery system for young children, linking service providers, empowers families, & engages communities.

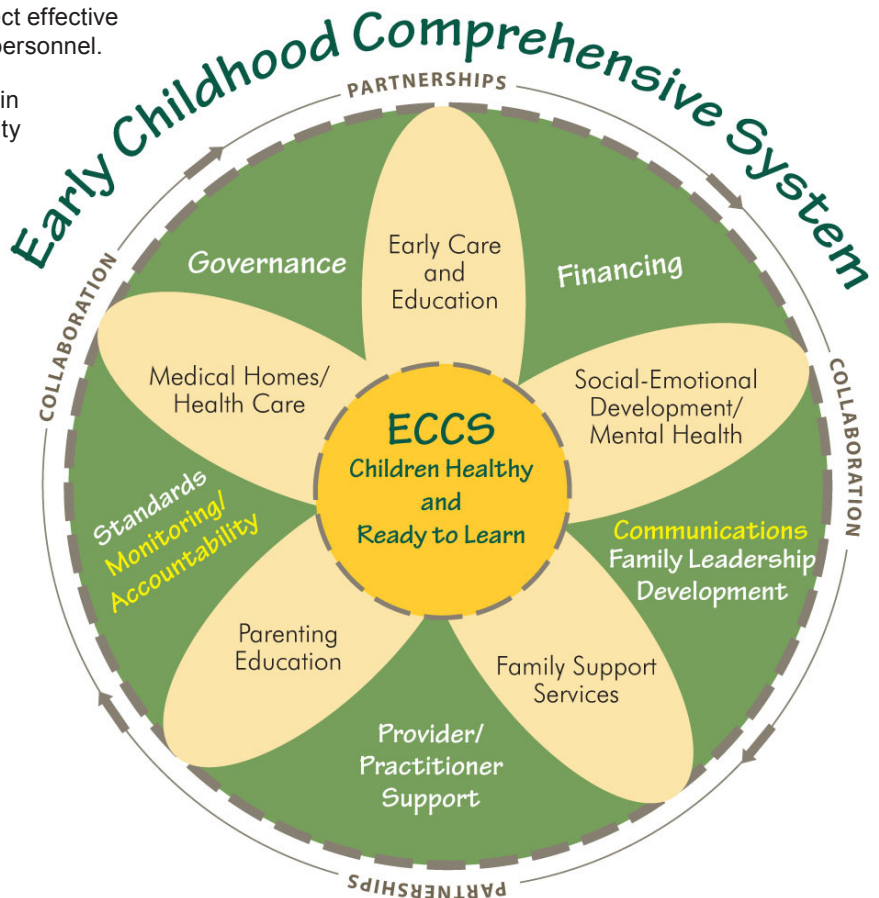


GOVERNANCE & INFRASTRUCTURE- KEY ELEMENTS:

Outcome #1: There will be a permanent governance structure to provide oversight of a comprehensive, integrated service system for young children prenatal to eight.

Outcome #2: There will be a culturally responsive, comprehensive, accessible service delivery system that links service providers, empowers families, and engages communities.

- There will be an early childhood governance structure with clearly defined responsibilities and decision-making authority.
- There will be a network of effective community and regional organizations supporting comprehensive early childhood services.
- State plans and policies will reflect a comprehensive, integrated approach to services for young children and their families.
- Integrated fiscal strategies will exist to support early childhood programs and services.
- There will be a system for supporting integrated, cross-agency professional development that maximizes state resources and supports identified outcomes.
- There will be clear mechanisms for communicating with stakeholders about early childhood issues and developments.
- Program standards will reflect effective EC practices and qualified personnel.
- A monitoring system will be in place to ensure accountability and continual quality improvement.
- Families will have opportunities to enhance and exercise their leadership skills.





ACCESS TO MEDICAL HOMES & INSURANCE:

Outcome #3: The physical, developmental, and/or social emotional concerns of young children will be identified and addressed as early as possible.

- Medical practitioners will provide comprehensive well-child exams which include developmental and social emotional screenings consistent with the American Academy of Pediatrics periodicity schedule.
- Children identified with developmental or medical needs will be referred to appropriate services and receive the services and care they need.
- Young children will have access to oral health prevention and intervention programs and services.
- Young children, especially those at risk for lifelong chronic conditions, will have access to overweight/obesity treatment services.
- Early Childhood Programs will have access to health information and consultation.

Outcome #4: Young children and their families will have access to medical homes that accessible, family centered, coordinated, continuous, comprehensive, compassionate and culturally competent care.

- More children will be enrolled in public health insurance programs (Medicaid, Denali KidCare (DKC), etc.)
- Families will be informed about the importance of their child's health and development and recognized as the principal caregivers and decision makers in their child's care.

MENTAL HEALTH & SOCIAL EMOTIONAL DEVELOPMENT:

Outcome #5: Young children and their families will receive appropriate early mental health services through Medicaid and other sources.

- There will be reimbursement mechanisms so young children and their families have access to the services necessary to address their social/emotional development.
- Health care providers will recognize the importance of caregiver mental health on early childhood social emotional well-being and regularly screen primary caregivers for maternal depression and adult mental health and substance abuse issues.
- Services will reflect best practices including evidenced based programming when appropriate.

Outcome #6: The State of Alaska will have a qualified, well-trained workforce providing for the social and emotional well-being of young children.

- There will be a statewide early childhood mental health professional development plan which supports, connects and aligns efforts into a comprehensive system of training and education.
- There will be a system for clinical consultation and support for mental health professionals working with young children and their families.
- Early childhood programs will have access to mental health specialists and mental health consultation.
- Parent information on social emotional development will be available through EPSDT, medical providers and early childhood programs.



EARLY CARE AND LEARNING:

OUTCOME #7: Early Care & Learning programs for children birth through age 8 will be based on standards of best practice.

- ECL programs will be guided by a standard ECL framework that meets or exceeds established health, safety, and program standards.
- ECL programs will use ELGs to better understand, support and enhance children's development and learning.
- ECL programs will use a menu of appropriate methods to regularly screen, assess and monitor progress of individual children.
- ECL programs will use specialists in health, mental health, curriculum, developmental, family support, program administration, etc. to improve practice.
- ECL programs will implement obesity prevention (or physical activity and nutrition promotion) and intervention programs and services.

OUTCOME # 8: The early childhood workforce will be well qualified and fairly compensated.

- There will be a statewide system of professional development (utilizing the State Professional Development Plan).
- The professional development framework articulating career advancement will be utilized by ECL providers and employers (Qualifications, Credentials & Pathways)
- ECL practitioners will meet educational requirements for their positions. (Qualifications, Credentials & Pathways)
- The ECL workforce will be compensated comparable to professionals with like qualifications & responsibilities in education and healthcare. (Funding)

OUTCOME #9: Children and families will be able to find and access appropriate ECL programs.

- There will be a range and supply of program models to meet the developing needs of young children and their families.
- Families will be able to make informed choices about their ECL program.
- Families with financial needs will have access to resources to help cover the costs of ECL.

OUTCOME #10: Families will be full and respected partners in their children's ECL programs.

- ECL programs will have active family support and parent involvement components.
- ECL programs will support and encourage moms to breastfeed and continue breastfeeding when returning to work.
- ECL programs will be responsive to the different cultural and language needs of the families and children that they serve.
- ECL will facilitate the smooth transitioning of children between various settings.

Culturally responsive, comprehensive & accessible service delivery system for young children, linking service providers, empowers families, & engages communities.



FAMILY SUPPORT AND PARENT EDUCATION:

Outcome 11#: Families of young children will have access to community-based parenting and family support programs.

Family partnerships are embedded in each of the other Component Areas

- All families with young children will have access to a user-friendly, culturally competent, integrated service delivery system.
- Programs serving young children and their families will be responsive to emerging family and community issues and model the principles of family support in all program activities.
- Families will be well-informed regarding parenting and child development issues.
- Young children and their families will have access to healthy food and nutrition information.
- Families will be supported in their role as primary caregivers.